

*'Feel
your Airport'*

Primary Cable is the Backbone

GE-RED

Elevated Runaway Edge Light

Standard compliance

ICAO

Aerodrome Design Manual
Annex 14, Volume 1

EASA

CS-ADR-DNS Issue 5

AENA

DIN/DSEYN/PPT/016-06/12

STAC

SPE/SE/E/VIS/6008

IEC

61827

FAA

AC150/5345-46, EB67

Use

Elevated Runway Edge Light

Description

Low consumption dimmable LED light (EB67).

Compatible with existing AGL infrastructures (6.6A IEC/FAA CCRs, thyristor or IGBT).

Transformerless architecture with low inrush current and high power factor.

Cast aluminium body -UV-resistant powder coating.

Shared parts across the whole range of lights thanks to a modular design, to reduce spare references.

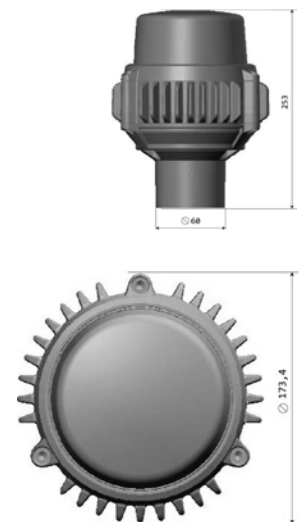
Open fail monitoring capability.

Surge protection.

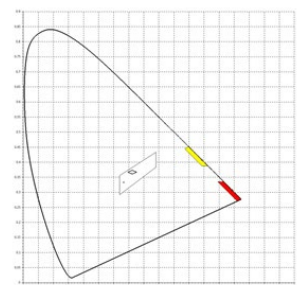
Technical Data

Environment	
Operating temperature	-55°C/+55°C
Storage temperature	-55°C/+85°C
Protection index	IP68
Humidity	0%-100%
Mechanical	
Width	173,4mm
Height	253mm
Weight	3,5kg
Electrical	
Power Supply	2,8A - 6,6A
Max admissible current	12A
Power Consumption	<21W (WW), <15W (WY), <20W (WR), <14W (YR) + 3W OMNI
Power factor	>97%
Life span	>80000H

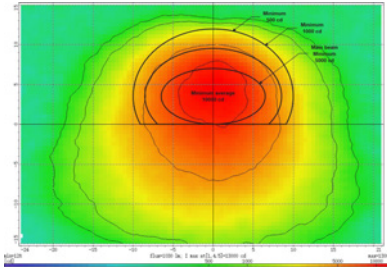
Drawing



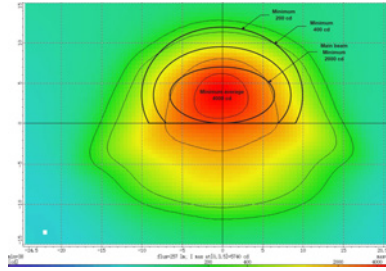
Chromaticity



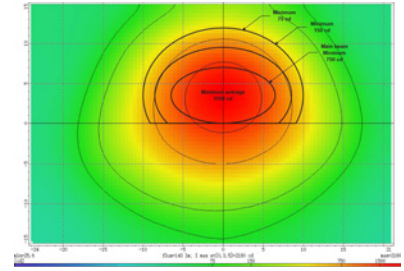
Photometry



White



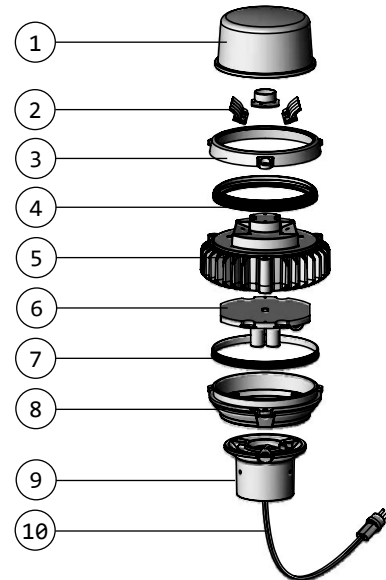
Yellow



Red

Components and spare parts

Drawing Reference	Part	Code
1 and 2	Elevated bidi. light cover glass	ELEVBOD0007
3 and 5	Elevated bidi. top light body	ELEVBOD0008
7, 8, 9 and 10	Elevated bidi. bottom light body, lens assembled	ELEVBOD0009
4	Seal ring for GE-RED top glass cover	ELEVBOD0010
7	Seal ring for GE-RED bottom light part	ELEVBOD0011
-	LED connection cable 01	IN08INT0000
10	Light cable lead 40cm long with gland	LIAC0000000
-	Electronic FOM module (5503)	LIACINT0000
6	Driver module for 1 cable lead	LIACINT0002
2	LED light source W0A0A	IN08LEDW000
2	LED light source R0A0A	IN08LEDR000
2	LED light source Y0A0A	IN08LEDY000
2	LED light source W0R2F	ELEVLEDW001
-	Breakable coupling	LIACINSEL01
-	Baseplate 187mm	LIACINSEL00



Ordering Code

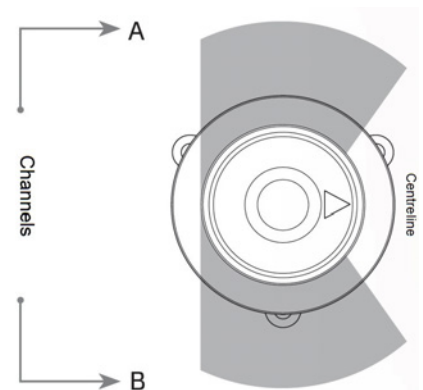
GE-RED - ABC - X - X

COLOUR
 W (White), R (Red), Y (Yellow), B (Blank)

A: Channel A
 B: Channel B
 C: Omnidirectional (W or B)

CONNECTORS
 1 FAA L-823 bipolar
 2 FAA L-823 bipolar

MONITORING
 0 No
 1 Fail open





GRP Iluminación, S.A.U.

Calle de los Reyes Católicos, 6. Nave 102
28108 - Alcobendas (Madrid) - Spain / +34 91 327 19 66



GRP

www.grp-airsys.com